



2 Bed House - End Terrace

31 Tamworth Street, Duffield, Belper DE56 4ER

Offers Around £239,950 Freehold



2



2



1



D

Fletcher
& Company

www.fletcherandcompany.co.uk

- Highly Appealing End Terrace Cottage
- Ecclesbourne School Catchment Area
- A Short Walk into Duffield Village - Excellent Local Facilities (Bus/Train Service)
- Lounge & Study
- Kitchen/Dining Room
- Two Double Bedrooms
- First Floor Bathroom
- Private Garden
- No Chain Involved
- Character Features

Nestled in the charming village of Duffield, this highly appealing end-terraced cottage on Tamworth Street offers a delightful blend of comfort and convenience.

The property offers a lounge, small study and a kitchen/dining room. The cottage boasts two well-proportioned bedrooms and a first floor bathroom. Outside to the rear of the property is a private enclosed garden.

One of the standout features of this property is its prime location, just a short stroll from the heart of Duffield village. Residents will benefit from excellent local facilities, including convenient bus and train services,

With no chain involved, this cottage presents an excellent opportunity for both first-time buyers and those looking to downsize.

The Location

The village of Duffield is situated approximately 5 miles north along the main A6 arterial road and the village in turn has an excellent range of local shops, public houses, restaurants, supermarket, tennis and squash club, Chevin golf club, recreational facilities including the Eyes Meadow Nature reserve. Local primary schools include William Gilbert Endowed School, Meadows Primary School and the well-known Ecclesbourne Secondary School. Duffield is also positioned along the East Midlands Mainline and is within easy reach of famous attractions such as Chatsworth House and the historic spa town of Matlock.

Accommodation

Ground Floor

Entrance Hall

5'3" x 2'11" (1.62 x 0.90)

With entrance door, wood flooring, radiator and staircase leading to first floor.

Lounge

15'5" x 11'3" (4.71 x 3.44)

With stone fireplace with inset living flame gas fire, wood flooring, two radiators and double glazed window with fitted blind with aspect to front.



Study

6'5" x 5'6" (1.98 x 1.70)

With radiator and double glazed window.



Kitchen/Dining Room

11'9" x 10'0" (3.60 x 3.05)

With one and a half stainless steel sink unit with mixer tap, wall and base fitted units with matching worktops, built-in four ring gas hob, built-in double electric fan assisted oven, plumbing for automatic washing machine, space for fridge/freezer, radiator, double glazed window and stable door giving access to private garden.



Pantry

3'10" x 2'10" (1.17 x 0.88)

With shelving and internal panelled door.

First Floor Landing

5'3" x 3'4" x 3'0" x 2'11" (1.61 x 1.02 x 0.92 x 0.90)

With radiator.

Bedroom One

11'4" x 9'9" (3.46 x 2.98)

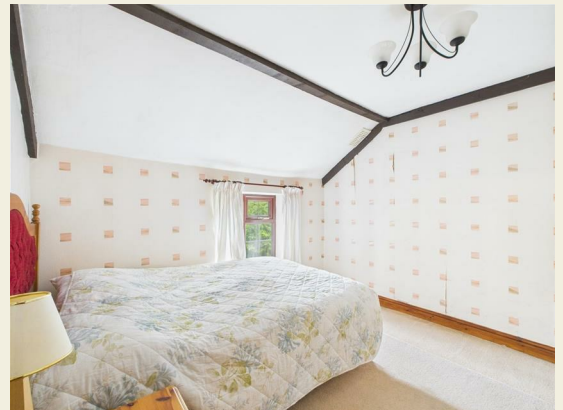
With two built-in, fitted double wardrobes, radiator, double glazed window with fitted blinds with aspect to front and internal panelled door.



Bedroom Two

11'6" x 10'2" (3.51 x 3.10)

With radiator, decorative beams to ceiling, double glazed window and internal panelled door.



Bathroom

8'2" x 5'10" (2.49 x 1.80)

With corner bath, pedestal corner wash handbasin, low level WC, separate shower cubicle with electric shower, tiled walls, wood flooring, radiator, sealed unit double glazed window and internal panelled door.



Front Garden

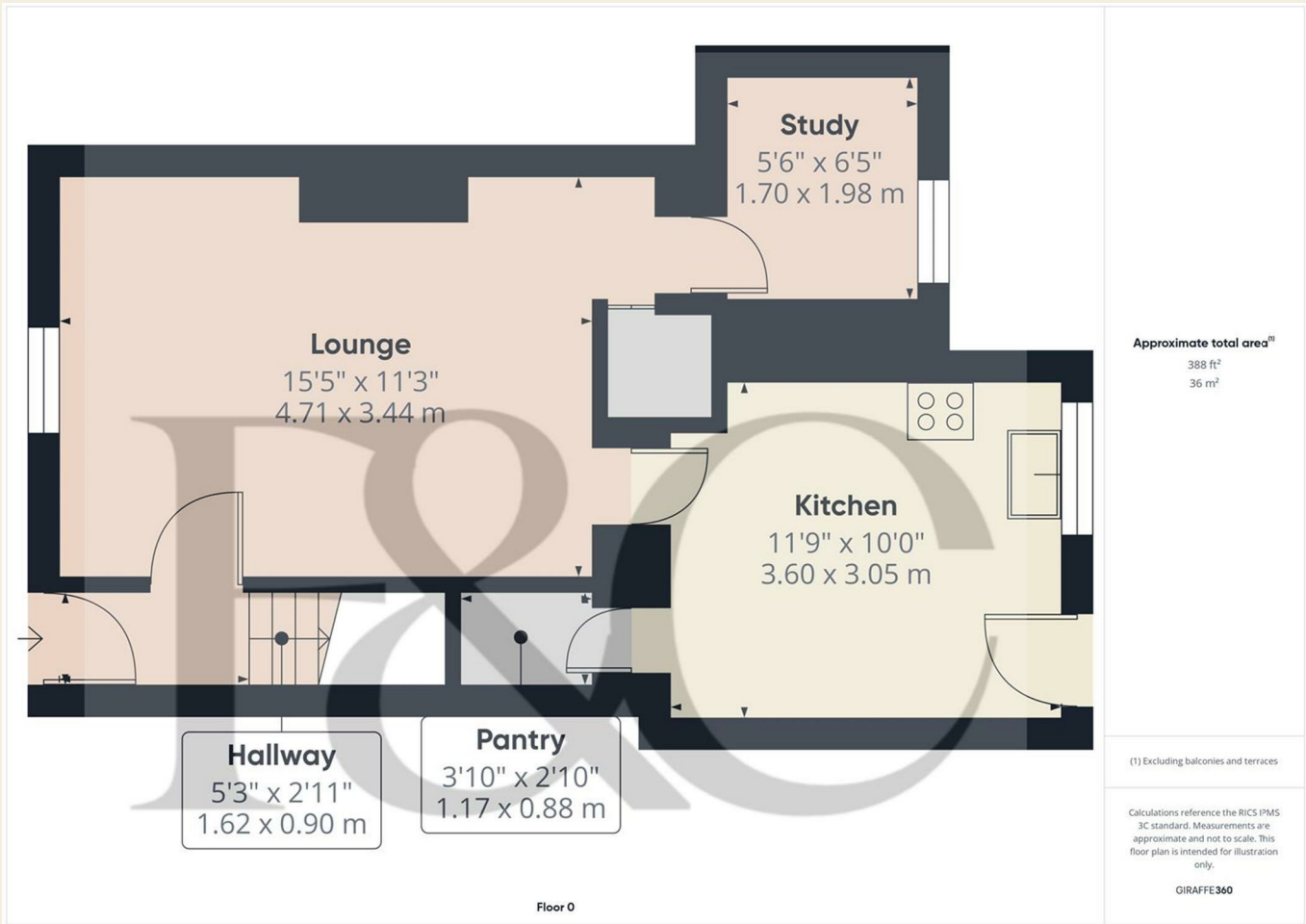
The property is set back from the pavement edge behind a small fore-garden with shrubs, plants, natural stone wall and hand gate with pathway to entrance door.

Rear Garden

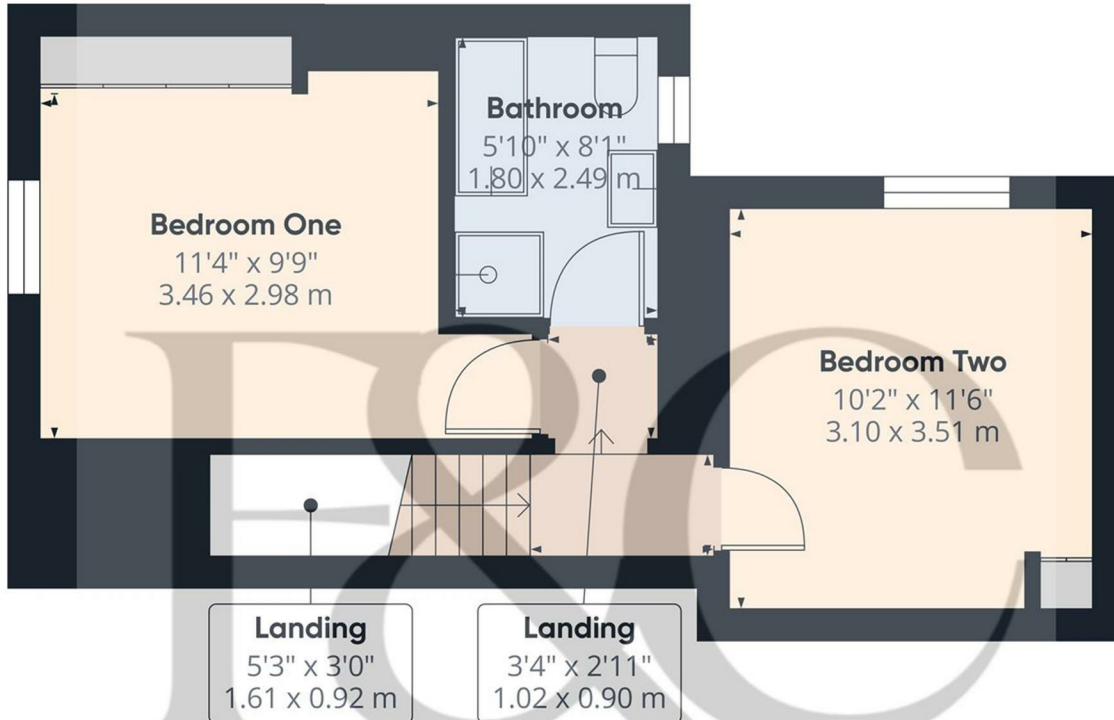
To the rear of the property is a private, enclosed rear garden laid to lawn with flower beds, patio and rear access gate. Timber shed.



Council Tax Band B



These particulars do not constitute an offer or a contract neither do they form part of an offer or contract. The vendor does not make or give and Messrs. Fletcher & Company nor any person employed has any authority to make or give any representation or warranty, written or oral, in relation to this property. Whilst we endeavour to make our sales details accurate and reliable, if there is any point which is of particular importance to you, please contact the office and we will be pleased to check the information for you, particularly if contemplating travelling some distance to view the property. None of the services or appliances to the property have been tested and any prospective purchasers should satisfy themselves as to their adequacy prior to committing themselves to purchase.



Approximate total areaⁱⁱⁱ
323 ft²
30 m²

(1) Excluding balconies and terraces

Calculations reference the RICS IPMS 3C standard. Measurements are approximate and not to scale. This floor plan is intended for illustration only.

GIRAFFE360

Floor 1

Energy Efficiency Rating

	Current	Potential
<i>Very energy efficient - lower running costs</i>		
(92 plus) A		83
(81-91) B		
(69-80) C		
(55-68) D		
(39-54) E	55	
(21-38) F		
(1-20) G		
<i>Not energy efficient - higher running costs</i>		
England & Wales	EU Directive 2002/91/EC	

Environmental Impact (CO₂) Rating

	Current	Potential
<i>Very environmentally friendly - lower CO₂ emissions</i>		
(92 plus) A		83
(81-91) B		
(69-80) C		
(55-68) D		
(39-54) E		
(21-38) F		
(1-20) G		
<i>Not environmentally friendly - higher CO₂ emissions</i>		
England & Wales	EU Directive 2002/91/EC	

These particulars do not constitute an offer or a contract neither do they form part of an offer or contract. The vendor does not make or give and Messrs. Fletcher & Company nor any person employed has any authority to make or give any representation or warranty, written or oral, in relation to this property. Whilst we endeavour to make our sales details accurate and reliable, if there is any point which is of particular importance to you, please contact the office and we will be pleased to check the information for you, particularly if contemplating travelling some distance to view the property. None of the services or appliances to the property have been tested and any prospective purchasers should satisfy themselves as to their adequacy prior to committing themselves to purchase.